

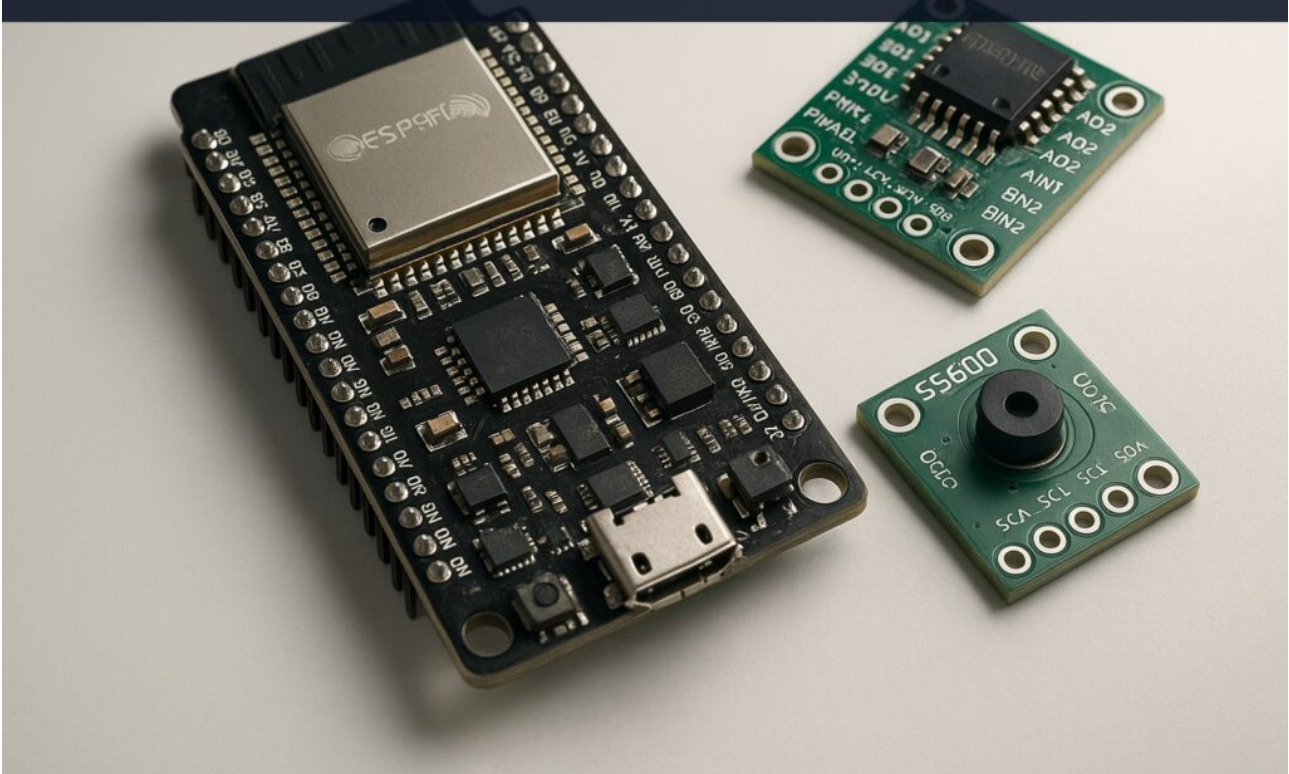
Practical case: ESP32 NFC access with PN532, 2.9 e-paper



Build an advanced NFC access control terminal with ESP32, PN532, and E-Paper. Learn to manage ACLs and enhance your skills in microcontroller projects.

Practical case: ESP32 PID DC motor control, AS5600, TB6612

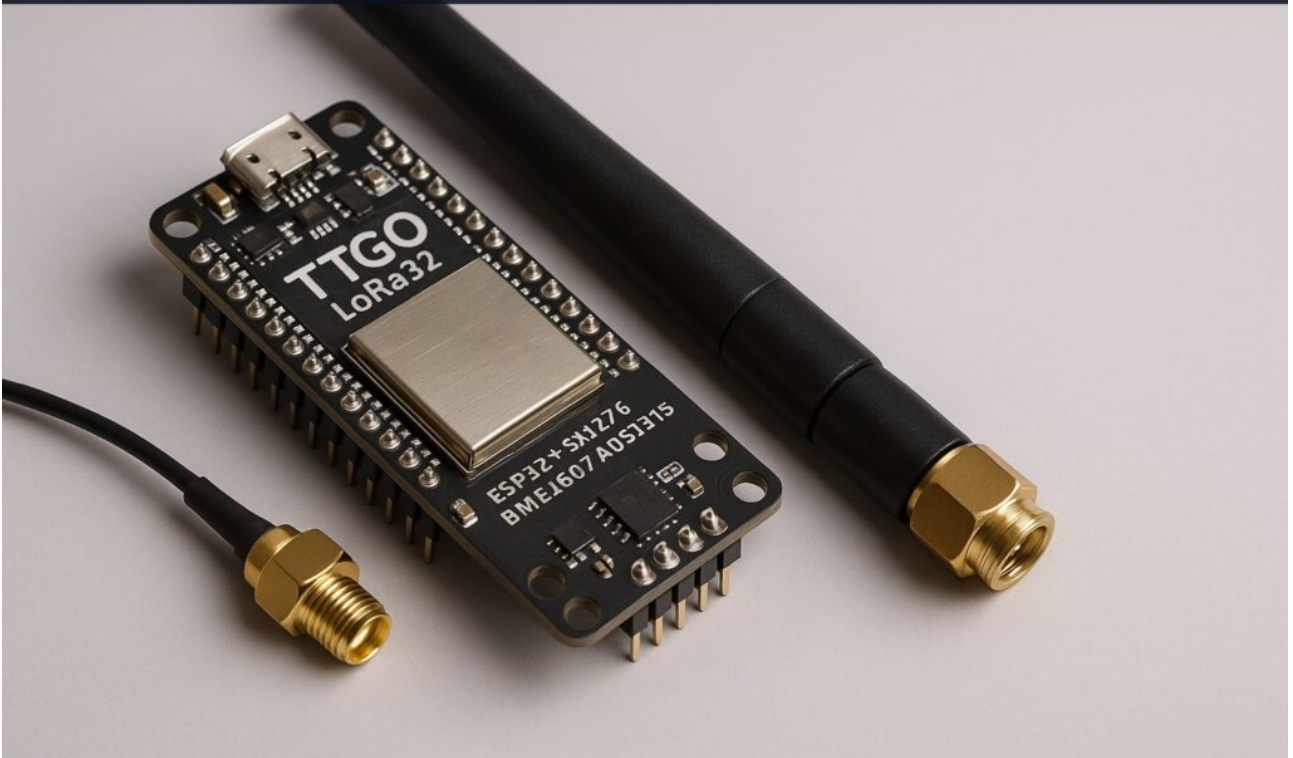
Practical case: ESP32 PID DC motor control, AS5600, TB6612



Master PID velocity control of a DC motor with ESP32 DevKitC, TB6612FNG, and AS5600. Learn advanced techniques for precise motor regulation.

Practical case: Low-power LoRa ESP32 agricultural telemetry

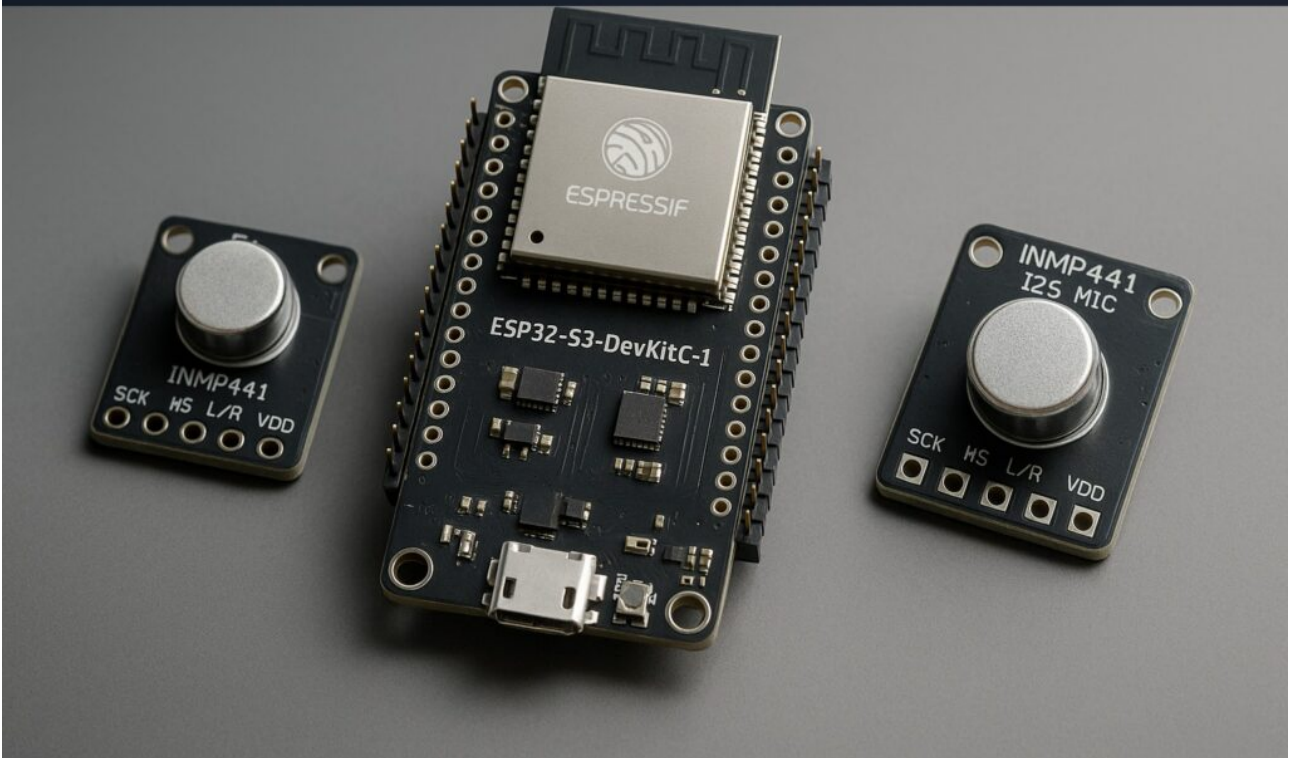
Practical case: Low-power LoRa ESP32 agricultural telemetry



Explore advanced LoRa agro telemetry with TTGO LoRa32, BME280, and ADS1115. Build a low-power sensor node for environmental monitoring.

Practical case: Beamforming & DoA on ESP32-S3, I2S INMP441

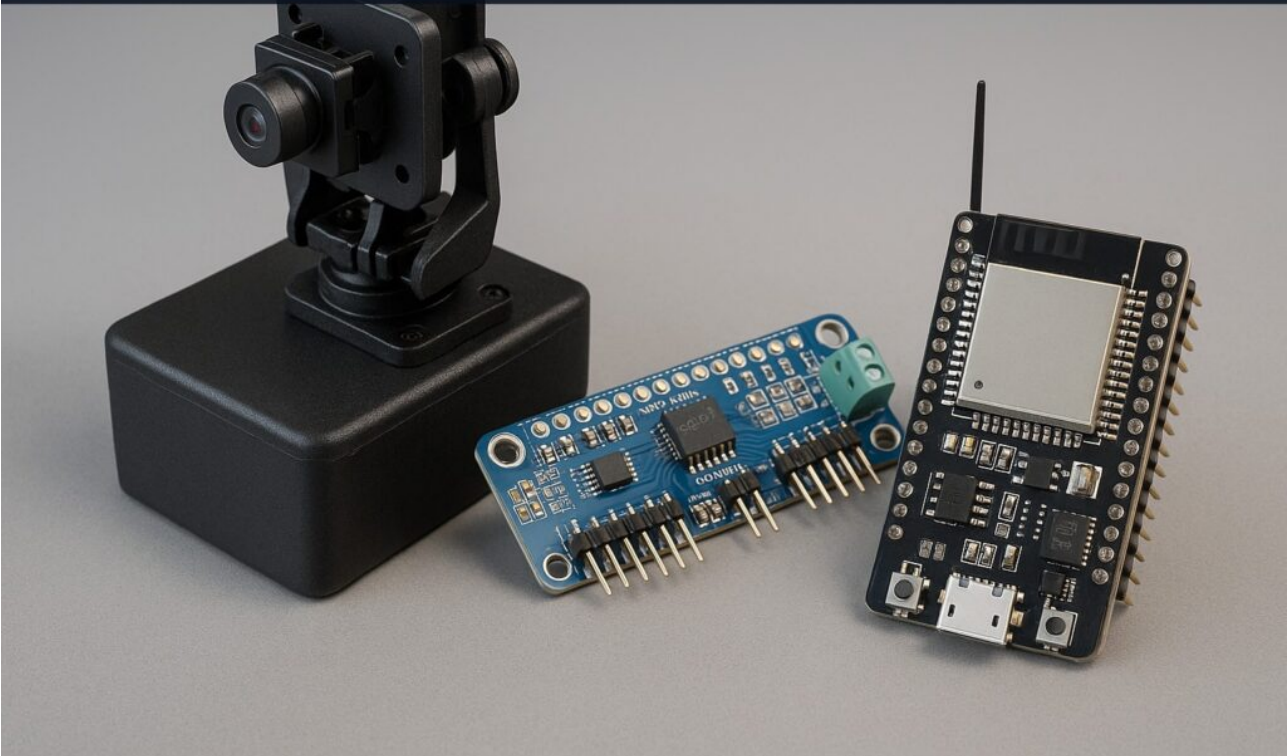
Practical case: Beamforming & DoA on ESP32-S3, I2S INMP441



Build an advanced acoustic direction-finding system using ESP32-S3-DevKitC-1 and INMP441 mics. Learn stereo audio capture and TDOA estimation.

Practical case: Pan/Tilt WebSocket OV2640 ESP32-CAM PCA9685

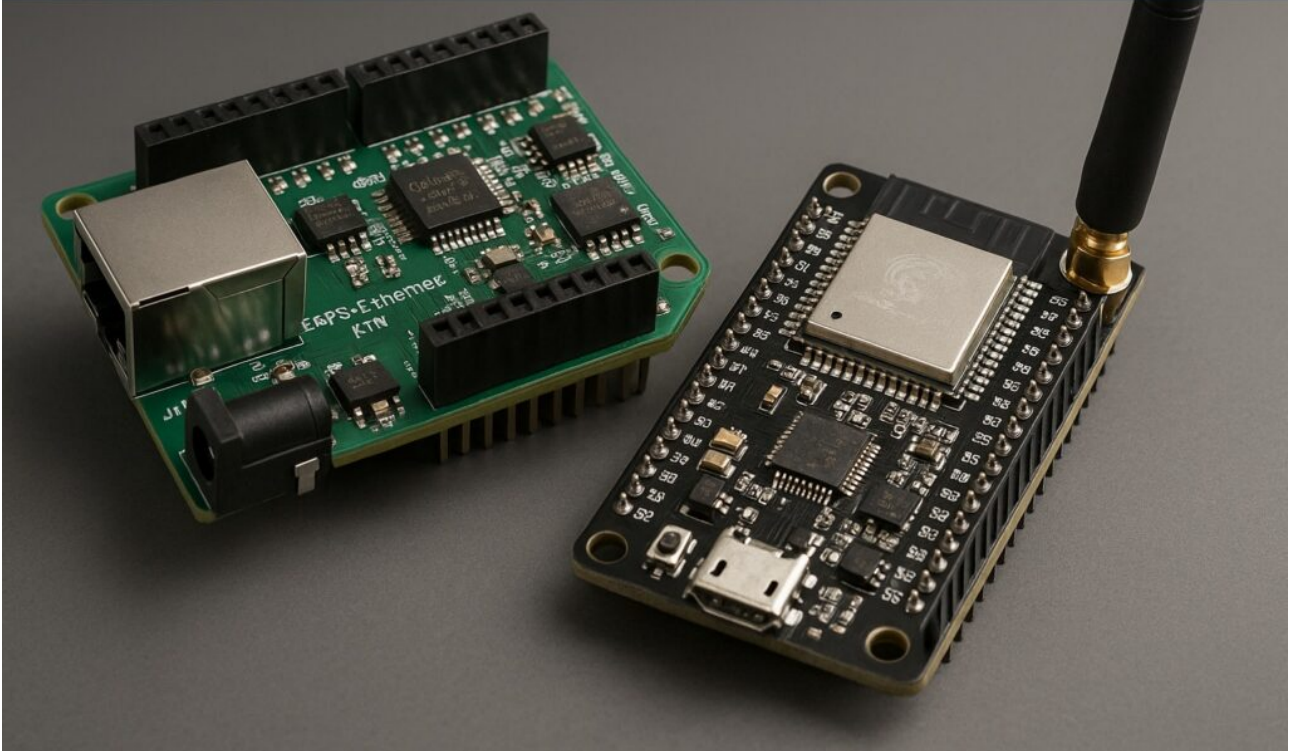
Practical case: Pan/Tilt WebSocket OV2640 ESP32-CAM PCA9685



Transform your ESP32-CAM into a WebSocket streaming camera with pan-tilt control using PCA9685. Follow our guide for setup and implementation.

Practical case: ESP32 Ethernet Modbus RS485 Energy Logger

Practical case: ESP32 Ethernet Modbus RS485 Energy Logger



Transform your ESP32-Ethernet-Kit into a Modbus RTU master for energy logging. Learn to read metrics and expose data over Ethernet with ease.